

Off-cut Remover HEKTOR 2



Hektor separates milled PCBs carefully and fast. The off-cut material is removed smoothly and precisely. The matrix consists of two parts. This ensures easy and cost-saving change of the blades. Compressed air is used for the separation process. The operating pressure can be set on the machine. When the foot switch is pressed, the off-cut is punched out. The off-cuts are collected in the collecting box. When the gate is opened the waste material can be extracted.



Safe Operation

The PCB is slipped with its milled groove over the blade and is placed onto the matrix. The off-cut is pulled under the blade. When the foot switch is pressed, the off-cut is punched out and the waste material is collected inside the machine.

Part No.	Description
8932145	Off-Cut Remover Hektor 2 Contents of delivery: Hektor 2 with air pressure regulator Foot switch Adapter for dust extraction 1 L-blade – Please choose the size

Technical data	
Separation type	Punch blade
PCB thickness	max. 2.5 mm
Air connection	1/4"-plug-in coupler
Operating pressure	typical 4 bar
Mains voltage	10 - 35° C
Storage/transport temperature	-20 - 50° C
Humidity, non-condensing	10 - 85%
Safety regulations	CE, FCC class A
Weight	2.7 kg
Dimensions H x W x D	170 x 220 x 255 mm



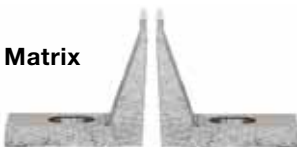
T-Blade

With the T-blade off-cuts can be punched out right and left of the blade without turning the PCB.



L-Blade

The L-blade will be used if there are small distances between the off-cuts.



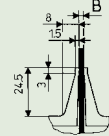
Matrix

Included in delivery.

Blades

To ensure the blade will not be jammed in the PCB, the blade should be at least 0.15 mm smaller as the milled groove.

Part No.	Description	Width of milled groove	Recommended blade thickness	Length of blade	Length of cut	Free of compon. on solder side	Length of milled groove	Width of off-cut
8932137.001	Blade 1.5 T	≥1.5	1.35	17.2	4.7	>19.0	>19.0	3.0
8932138.001	Blade 2.0 T	≥2.0	1.85	17.2	5.2	>19.0	>19.0	3.0
8932191.001	Blade 2.4 T	≥2.4	2.25	18.0	5.7	>19.0	>19.0	3.0
8932139.001	Blade 2.5 T	≥2.5	2.35	18.0	5.7	>19.0	>19.0	3.0
8932144.001	Blade 3.0 T	≥3.0	2.85	18.0	5.7	>19.0	>19.0	2.5
8932122.001	Blade 1.5 L	≥1.5	1.35	12.0	4.7	>15.0	>13.0	3.0
8932123.001	Blade 2.0 L	≥2.0	1.85	12.0	5.2	>15.0	>13.0	3.0
8932141.001	Blade 2.4 L	≥2.4	2.25	12.0	5.7	>15.0	>13.0	3.0
8932124.001	Blade 2.5 L	≥2.5	2.35	12.0	5.7	>15.0	>13.0	3.0
8932125.001	Blade 3.0 L	≥3.0	2.85	12.0	5.7	>15.0	>13.0	2.5
8932171.001	Matrix (as spare part)							



Blades with varying thickness on request.

